

DRESSING ROOMS AND BACKSTAGE FACILITIES

Usage of backstage rooms is included with your theatre rental.

Front of House rooms are also available. See FOH information for details - additional fees apply.

MAIN FLOOR ROOMS

GREEN ROOM / VIP LOUNGE

(Capacity 30) 18'x25' (5.4m x 7.6m)



The Green Room is located down stage right and is equipped with lounge furniture, serving counter, fridge, phone lines, internet, and television with show feed. Wheelchair lift from auditorium level to stage level. Often used as a lounge or production office; additional tables and chairs available.

DRESSING ROOMS 1 through 3

5' x 10' each (1.5m x 3m)

Three private dressing rooms designed for one person. All individual dressing rooms contain makeup counters with lights/mirrors, and personal toilets and showers.

PRODUCTION OFFICE

(Promotor or Stage Manager) 9'x7' (2.7m x 2.1m)

Located mid stage right with doors to the stage and the dressing room hallway. Often used as the promoter's rep. office c/w phone lines and Internet.

STAR SUITE A & B DRESSING ROOMS

13'x26' (3.9mx7.9m) Each



Two 3-room suites comprised of a sitting room, dressing room, and bathroom. c/w couch, easy chairs, coffee table, table & chairs, upright piano, phone lines and internet.

CHORUS DRESSING ROOMS

Two large Chorus rooms with washrooms and showers



Female & Male Chorus Dressing Rooms

15' x 23' (4.5m x 7m)

Multi-person dressing rooms with makeup facilities, washrooms and showers.

Female Chorus dressing room has 30 individual make-up mirrors.

Male Chorus dressing room has 28 individual make-up mirrors.

WARDROBE ROOM

24x30' (7.3m x 9.1m)



Located at SR end of crossover hallway near stage door, c/w rolling wardrobe racks, fitting room, 10 makeup mirrors, cutting table, 3 washers and 3 dryers, large laundry sink, phone lines, internet and television with show feed. Often used as a production office.

Wardrobe equipment (steamers, irons, sewing machine) is available to clients hiring local IATSE wardrobe staff.

CHORUS LOUNGE / FOOD SERVICE ROOM

(Capacity 30) 16'x35' (4.8m x 10.6m)



Located in the crossover hallway. Can accommodate 30 seated at tables. c/w kitchenette, fridge, microwave, pop, and snack machine, phone lines and Internet, and television with show feed.

WIG & MAKE-UP ROOM

9'x13' (2.7m x 3.9m)



Small room located U.S.R with doors to the stage and to the dressing room hallway. c/w hair sink, 2 hair dressing chairs, phone lines and Internet.

LOWER FLOOR ROOMS

CONDUCTOR'S SUITE

12'x15' & 15'x9' (3.6m x 4.5m & 4.5m x 2.7m)



A 3-room suite comprised of a sitting room, dressing room, and bathroom. c/w couch, easy chairs, coffee table, table & chairs, upright piano.

MUSICIAN'S LOUNGE

(Capacity 50) 18'x37' (5.4m x 11.2m)



Located near the entrance to the orchestra pit. c/w kitchenette, phone lines, internet, instrument lockers

CHORUS DRESSING ROOMS

Two large Chorus rooms with washrooms and showers



Female & Male Chorus Dressing Rooms

13' x 31' (3.9m x 9.4m)

Multi-person dressing rooms with makeup facilities, washrooms and showers.

Lower floor female and male Chorus dressing rooms each have 24 individual make-up mirrors.

BARRE ROOM

37'x32' (11.2m x 9.7m)



Located in the basement c/w sprung dance floor, ballet bars, full length mirrors, and a television with show feed. Designed as a dance studio / warm-up room.

UPPER FLOOR ROOM

REHEARSAL HALL

50'x50' (15.2m x 15.2m)



Located on the upper level up, stage right, this large bright room provides a large rehearsal space with similar dimensions to the mainstage.

This room has won architectural awards and features natural light, hardwood floors, a 9' Steinway Concert Grand piano, kitchenette and television with show feed.

Washrooms are located just outside the rehearsal hall.

Accessible via stairs and elevator.

Often used as catering area for larger productions.

GENERAL NOTES

Dressing Rooms

INTERNET - Wireless internet is available in all rooms. Many rooms also have wired internet available.

TOWELS - The venue does not supply towels; local towel supplier contacts provided upon request.

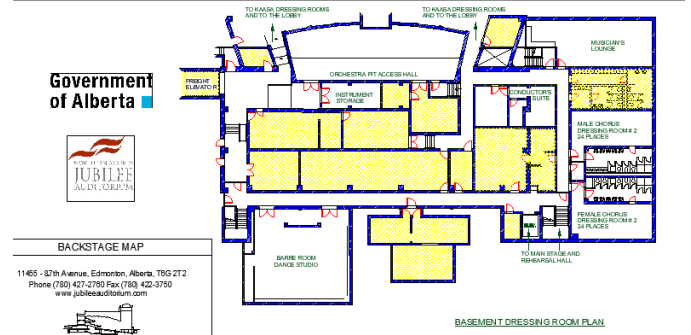
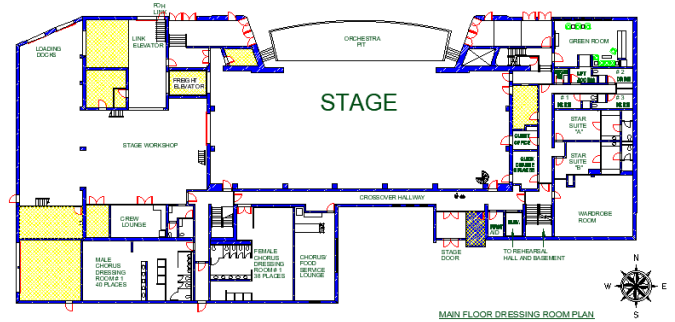
LOCKS - Dressing rooms locks are controlled via key cards and locks may be activated or de-activated upon request.

KEY CARDS – Key cards are required for travel between Lobby and backstage areas and for access to locked dressing rooms.

Key Cards may be requested via Stage Door Security. Lost card fee is \$50 per card.

BACKSTAGE FLOOR PLAN

Please contact NAJA.tech@jubileeauditorium.com for backstage maps and room drawings.



NOTE: Upper floor not pictured.

For Northern Alberta Jubilee Auditorium (Edmonton) advance information, please contact:
Cherie Hoyles | Technical Coordinator | 780.427.5933 | naja.tech@jubileeauditorium.com