

## STAGE - TECHNICAL SPECIFICATIONS



### ADDRESS & CONTACT INFORMATION

Venue Technical Contact:

Cherie Hoyles (780) 427-5933  
NAJA.Tech@JubileeAuditorium.com

11455 87 Avenue NW  
Edmonton, AB  
Canada T6G 2T2

General information: (780) 427-2760  
Main Theatre rental: (780) 427-5198  
Auxiliary room rental: (780) 427-6624

### SEATING CAPACITY

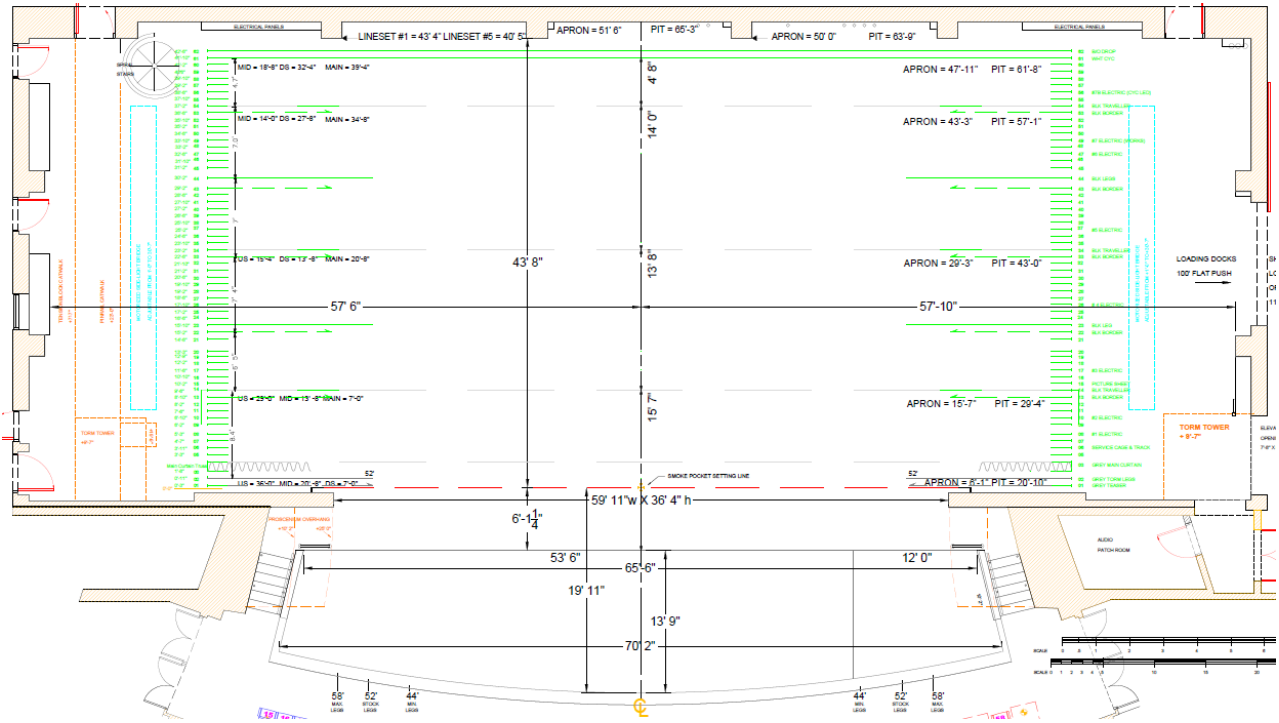
The Jubilee Auditorium is a soft seat theatre with a maximum Seating Capacity of 2514 patrons. The Orchestra Pit can be seated or unseated as required; there are labour costs associated with seating and restoring the orchestra pit.

Total: **2514 including 118 pit seats** (20 wheelchairs) / 2397 without pit seats (16 wheelchairs)  
Main Floor: **1159 including 118 pit seats** (16 wheelchairs) / 1042 without pit seats (12 wheelchairs)  
First Balcony: **748 seats** (4 wheelchairs)  
Second Balcony: **607 seats**

### GENERAL INFORMATION

- The Jubilee Auditorium has an excellent selection of House Drapery and staging equipment, use of which is included in venue rental.
- Single Purchase Counterweight System – 62 linesets on 8" centres; 2000# Arbour capacity; battens 84' long
- 2 loading dock with levelers; Push distance to stage – 100' / 30.5m (flat push)
- Bus parking for two (2) at stage door c/w shore power (4x 14-50R Range)– additional buses parking available.
- Parking for five (5) tractor-trailers in the South West corner of lot.
- Production office locations are on stage right; Catering location is the Chorus Lounge in the crossover hallway. See BOH Rooms info.
- Edmonton International Airport (YEG) is 30 minutes away (after customs). See Logistics info.

# STAGE DIMENSIONS



Overall 'usable' stage is approximately 100' wide X 43' deep (30.5m x 13m)

## PROSCENIUM OPENING

Maximum (no masking):	60' wide x 36' 4" high	(18.2m x 11.0m)
Typical:	52' w x 22' h	(15.8m x 6.7m)
Opening adjusted using soft Grey Valence and Legs.		

## STAGE DEPTH:

Smoke pocket "setting line" to back wall	43' 8"	(13.3m)
Apron depth to smoke pocket	6' 0"	(1.8m)
Stage from apron to back wall	49' 9"	(15.1m)
Orchestra pit to apron	13' 9"	(4.1m)
Down Stage edge of pit to back wall	63' 7"	(19.3m)
Wing space each side beyond legs	10'	(3m)

## DISTANCES - Stage Center Line to:

Loading Docks (2) flat push	150' 0"	(45.7m)
SL workshop door	61' 0"	(18.5m)
SL & SR side bridge (+32' 6" H fully raised)	47' 0"	(14.3m)
DSL torm. tower obstruction at +9' 6"	51' 0"	(15.5m)
SR pin rail at +22' 0"	50' 0"	(15.2m)
SR tension block rail at +7' 6"	53' 8"	(16.3m)
DSR torm. tower obstruction at +9' 6"	48' 0"	(14.6m)
SL & SR wall	58' 0"	(17.6m)

## STAGE FLOOR

- Stage surface is ¼" [StageLam](#); Floor colour is black throughout.
- All anchoring must be pre-approved and always pre-drilled. No traps available
- Concentrated Maximum Loads:
 

1" (25mm) diameter	1200lbs (545kg)
39" (1m) diameter	2000lbs (910kg)
10' (3m) diameter	12000lbs (5,400kg)

## COUNTERWEIGHT FLY SYSTEM INFORMATION

The venue is a single purchase, counterweight fly house and comes equipped with a house hang of drapery and lights as specified on the Line Plot. **IF YOU NEED THE FLYS STRIPPED OR ALTERED IN ADVANCE YOU MUST MAKE PRIOR ARRANGEMENTS.**

The client is responsible for all associated costs with the altering and the restoring of the house hang, within the rental period.

Counterweight System:	Single purchase	Available linesets:	36 (with house hang in place)
Total Number of linesets:	62 (each with 9-lift lines)	Total stock weight:	36,000 lbs (16,329kg)
Typical lineset spacing:	8" (0.2m)	Weights = 27 lbs; half weight = 10 lbs	(12.2kg / 4.5kg)
Lineset max load/arbours:	2000 lbs (907kg)	Spot Lines:	40 hemp spot line loft blocks are available on the grid

Stage Floor to Grid	85' 2" (25.9m)	Length of Pipe (batten)	84' 0" (25.6m)
Maximum Flying Travel	67' 0" (20.4m)	Maximum Flying Height	71' 0" (21.6m)
Operating Position: SR fly rail at	22' 10" (6.9m)		

Loft blocks are installed grid-mount style. There is some structural steel (indicated on line plot) that restricts the kicking of certain linesets.



**Please see our current Lineset Schedule and move sheet available in the Tech Specs section of the NAJA website.**

## RIGGING INFORMATION

### ONSTAGE

Show specific rigging points may be installed on the walking grid. Please work with the Technical Coordinator to determine allowable loads and locations. The maximum total load that may be imposed on the grid structure is 100,000lbs (45,359kg). Any event having loads exceeding a total of 60,000lbs (27,215kg) must have a load review carried out by a Professional Engineer to ensure that the loads are adequately distributed.

*Please consult our Grid Load Limit document for detailed information. Separate PDF on NAJA website.*

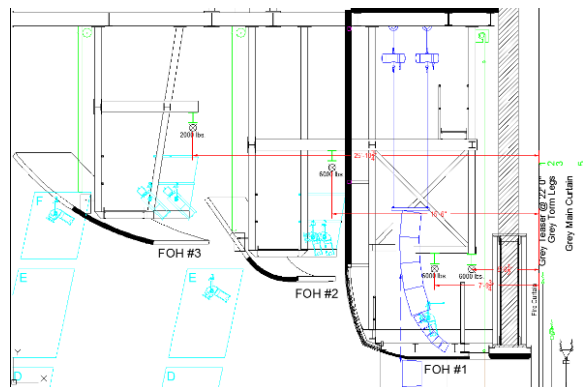
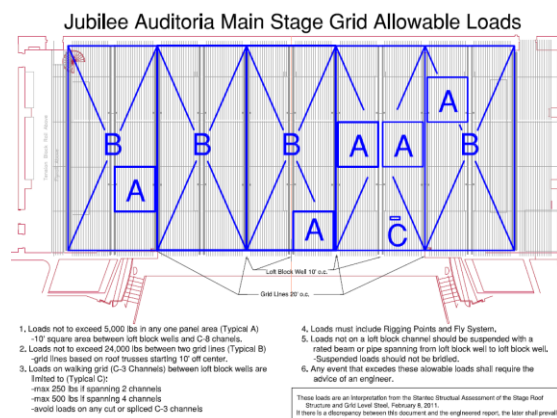
We have a variety of 10' (3m) aluminum I-beams and spanning pipes to help make rigging onstage simple and flexible.

### FOH

Three 6,000lb (2121kg) point load beams in the FOH ceiling above the orchestra pit have a maximum combined loading of 18,000lbs (8,164kg).

Five Beams above each of the lighting catwalks have a point load limit of 2,000lbs (907kg) with a maximum combined load limit of 6,000lbs

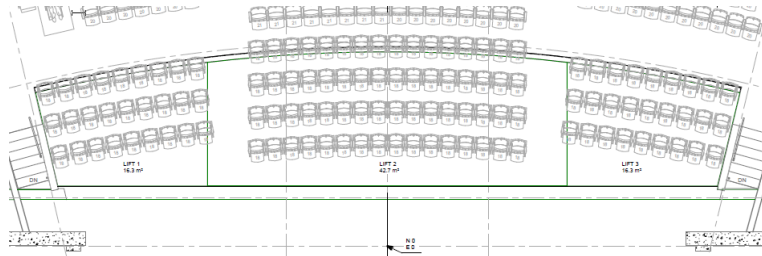
(2121kg). *Please review our FOH Rigging Plot for specific loads. Separate PDF on NAJA website.*



## ORCHESTRA PIT

The new NAJA Orchestra pits, installed in summer 2019, are a Spirallift system comprised of 3 separate lifts, a large centre lift and 2 symmetrical smaller lifts at SL and SR. The orchestra pits may be used at stage level, audience level, orchestra level, or at custom levels as needed. All lifts may travel from stage level to a depth of 8'10" below the stage. Railings must be installed for pit moves below 47".

PIT SEATING at Auditorium level – 118 additional seats may be added to the Main floor seating by lowering the orchestra pits to audience level and installing portable seating. The Lessee is responsible for all labour costs for installation of the pit seats and removal of seats following their event.



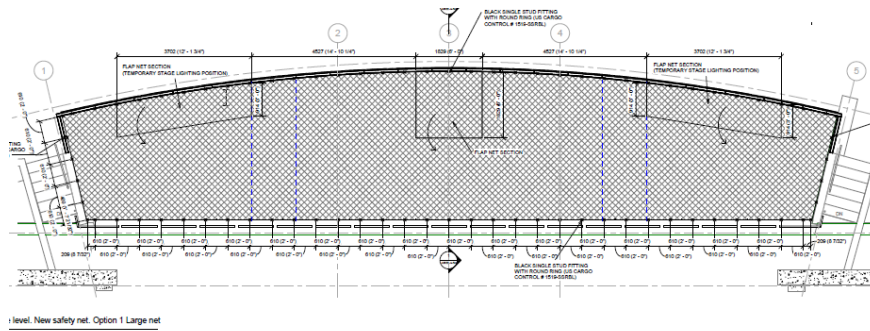
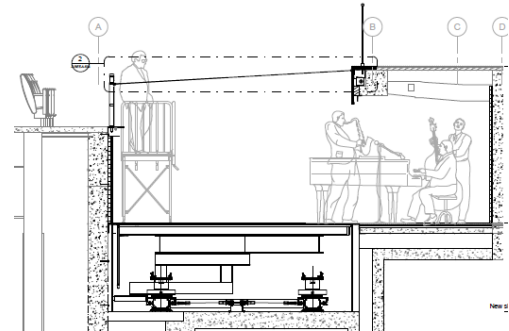
PERFORMANCE SPACE at Auditorium Level – the pits may be used as a performance space either with a front wall or without. This configuration is often used as a choir or orchestra space in front of the main stage area.

ORCHESTRA LEVEL – To accommodate various size orchestras, either the centre lift only or all 3 lifts may be used at lower orchestra level. With all 3 lifts lowered, the orchestra pit and crossover may accommodate approximately 60 musicians. Venue chairs, stools, stands and lights are available. **If the orchestra pit is lowered for use further than 47" (1.2m) below stage level, our orchestra pit nets must be used.** The Lessee is responsible for the labour costs to set and strike the pit net.

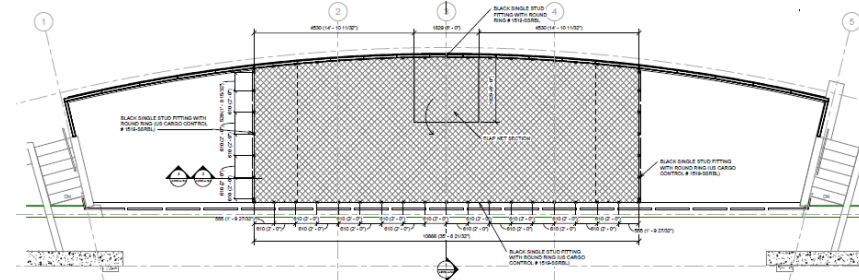
Access to the lowered pit may be gained from the basement level and equipment may be transported to the lower level via the freight elevator.

**The orchestra pit shall not be moved with performers on it.**

Overall Pit Length (SL-SR)	65' 6"	(19.9m)
Small Pits SR & SL Lengths	14' 10"	(4.5m)
Large Centre Pit Length	35' 9"	(10.9m)
Greatest Pit Width on CL	13' 2"	(4.0m)
Depth controlled by automated spirallift operated via remote.		



level. New safety net. Option 1 Large net



## HOUSE SOFT GOODS and DRAPERY

### FIRE CURTAIN

63' 0" W x 39' 0" H (19.2m x 11.8m)

Located U.S. edge of proscenium arch. Zetex drop raised on power winch.

Fire curtain line may not be impeded upon with permanent set items, unless special arrangements are made.

### HOUSE MAIN CURTAIN and PROSCENIUM MASKING – DARK GREY VELOUR

Main Border (Lineset 1) 1 only dark grey velour 76' 0" W x 20' 0" H (23.1m x 6m)  
House trim = 22' 0" from deck; may be adjusted as required.

Main Legs (Lineset 2) 1 pair legs dark grey velour 25' 0" W x 37' 3" H (7.6m x 11.3m)  
Minimum opening 30'; Maximum opening 60'

Main Curtain (Lineset 3 & 4) Comprised of two panels: 42' 0" W x 39' 0" H (12.8m x 11.8m); Full width 84' (25.6m)  
Automated control operated from SR. Main Curtain may open guillotine or traveler style.  
Truss spanning lineset 3 & 4 may not be struck; striking main drape takes 2 hours.

### LEGS - BLACK VELOUR

2 pairs only (black velour): 10' 0" W x 33' 0" H (3m x 10m)  
7 pairs only (black velour): 20' 0" W x 33' 0" H (6m x 10m)  
Leg Pairs in house configuration are tracked for adjustment of opening (Min = 45', Max = 73')

### BORDERS - BLACK VELOUR

2 only black velour at: 84' 0" W x 12' 0" H (25.6m x 3.6m)  
2 only black velour at: 84' 0" W x 14' 0" H (25.6m x 4.2m)  
2 only black velour at: 84' 0" W x 15' 0" H (25.6m x 4.5m)

### TRAVELLERS – BLACK VELOUR

3 only 2-panel travelers Panels 44' 0" x 33' 0" H (13.4m x 10m); Full width 84' (25.6m)  
House hang positions - Downstage traveler LS 14, Mid stage traveler LS 34, and Up stage traveler LS 54.  
Automated travel open/closed, or may be flown guillotine style (flyman required)

### BLACKOUT DROPS or GERMAN MASKING – BLACK VELOUR

1 only 60' black velour Blackout Drop 60' 0" W x 33' 0" H (18m x 10m)  
2 only 2-panel blackout drops Panels 40' 0" W x 33' 0" H (12.1m x 10m); Full width 80' (24.3m)

### SCRIMS

1 only black sharkstooth scrim at: 80' 0" W x 33' 0" H (24.3m x 10m)  
1 only white sharkstooth scrim at: 70' 0" W x 34' 6" H (21.3m x 10.5m)

### CYCLORAMA

Light Grey Cloth Filled Scrim 82' 0" W x 37' 0" H (24.9m x 10.9m)

### FRONT PROJECTION SCREEN (PICTURE SHEET)

White, Full stage size 64' 4" W x 28' 0" H (19.6m x 8.5m)

### VIDEO PROJECTION SCREENS – Front and Rear projection sheets available

Stumpfl Fast Fold Screen (16x9/widescreen) 11'6" H x 20' W (3.5m x 16m)  
Draper Truss-style Cinefold (3x4 ratio) 11'6" H x 15' W (3.5m x 4.5m)

### SPECIALTY DROPS

White Sheers 4 panels only 15' 0" W x 33' 0" H (4.5m x 10m)  
Black Magic 2 panels only 10' 0" W x 40' 0" H (3m x 12.1m)  
Shimmer Organza pink/blue 4 panels only 16' 0" W x 33' 0" H (5m x 10m)  
Austrian (Light gold) 1 panel 60' 0" W x 33' 0" H (18m x 10m)  
Genesis Drop (black/silver) 1 panel 60' 0" W x 33' 0" H (18m x 10m)

## PROJECTION INFORMATION

The Venue does not provide projectors; local AV supplier contacts are available upon request.  
For Front Projection - Projectors are typically placed in the projection booth, or on the first balcony rail.

Distance from:	Projection Suite	to	Proscenium Arch	143 feet	(43.5m)
Distance from:	Center First Balcony	to	Proscenium Arch	93 feet	(28.3m)
Distance from:	Center First Balcony	to	Downstage Edge of Pit	72 feet	(21.9m)
Distance from:	Center First Balcony	to	Upstage Edge of Pit	86 feet	(26.2m)

## STAGING EQUIPMENT

### MUSIC STANDS

Wenger "Bravo" adjustable	126 only
Wenger Conductor's stand	3 only

### CHAIRS

150 only Wenger musician chairs  
300 only (Royal Metal) black folding chairs  
150 only stacking chairs with arms, padded seats and backs

### PIANOS

2 Upright Rehearsal Pianos  
2 Steinway 9' Concert Grand Piano  
1 Heintzman 7' Grand Piano  
Pitch A440 (Additional pianos may be available)  
If Concert Tuning is desired it must be arranged in advance with the Technical Coordinator; \$200/tuning fee will apply.

### RISERS

4' x 8' Risers	16 risers, adjustable to the following heights:	8", 12", 16", 24", 32", 40"	(20, 40, 60, 80, 100 cm)
4' x 4' Risers	8 risers, adjustable to the following heights:	8", 12", 16", 24", 32", 40"	(20, 40, 60, 80, 100 cm)
4' x 8' Risers	2 risers, Wenger "Stagehand" height adjustable	16", 24"	(40, 60 cm)

2 Wenger 13' Pie  
4 Rolling Riser Platforms (4' x 8'); may be joined together to create drum risers or movable platforms.

### WENGER FOLDING CHOIR RISERS

4 step Choir Risers **11 units** In semi-circle or straight line formation can accommodate 18 per unit; back railing  
Dimensions (each 4-step unit) 6' 6" L x 6' 0" W x 2' 8" H (8" step) (1.9m x 1.8m x 0.8m) (20cm step)

3 step Choir Risers **11 units** In semi-circle or straight line formation can accommodate 11 per unit; no railing  
Dimensions (each 3-step unit) 6' 0" L x 4' 6" W x 2' 0" H (8" step) (1.8m x 1.3m x 0.6m) (20cm step)

### MISCELLANEOUS EQUIPMENT

Lecterns – 2 matching height adjustable lecterns  
Dance Floor – full stage coverage, minus orchestra pits

1 – Upright UL40 personnel lift, 46' (14.2m) maximum working height  
1 – Skyjack 26' drivable scissor lift, 32' (9.75m) maximum working height  
1 – Walky-stacker forklift  
1 – Stacking motor in shop