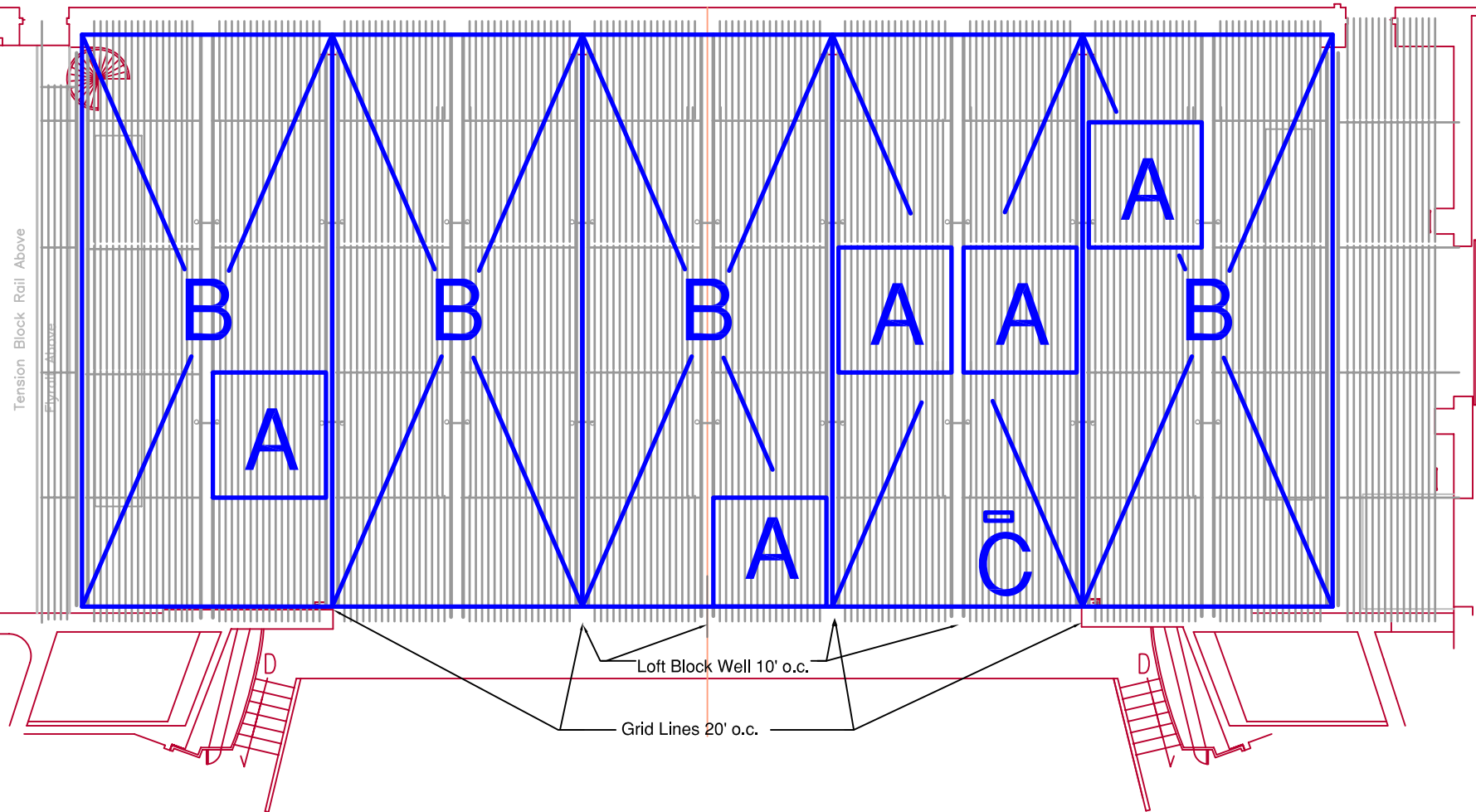


Jubilee Auditoria Main Stage Grid Allowable Loads



1. Loads not to exceed 5,000 lbs in any one panel area (Typical A)
 - 10' square area between loft block wells and C-8 channels.
2. Loads not to exceed 24,000 lbs between two grid lines (Typical B)
 - grid lines based on roof trusses starting 10' off center.
3. Loads on walking grid (C-3 Channels) between loft block wells are limited to (Typical C):
 - max 250 lbs if spanning 2 channels
 - max 500 lbs if spanning 4 channels
 - avoid loads on any cut or spliced C-3 channels

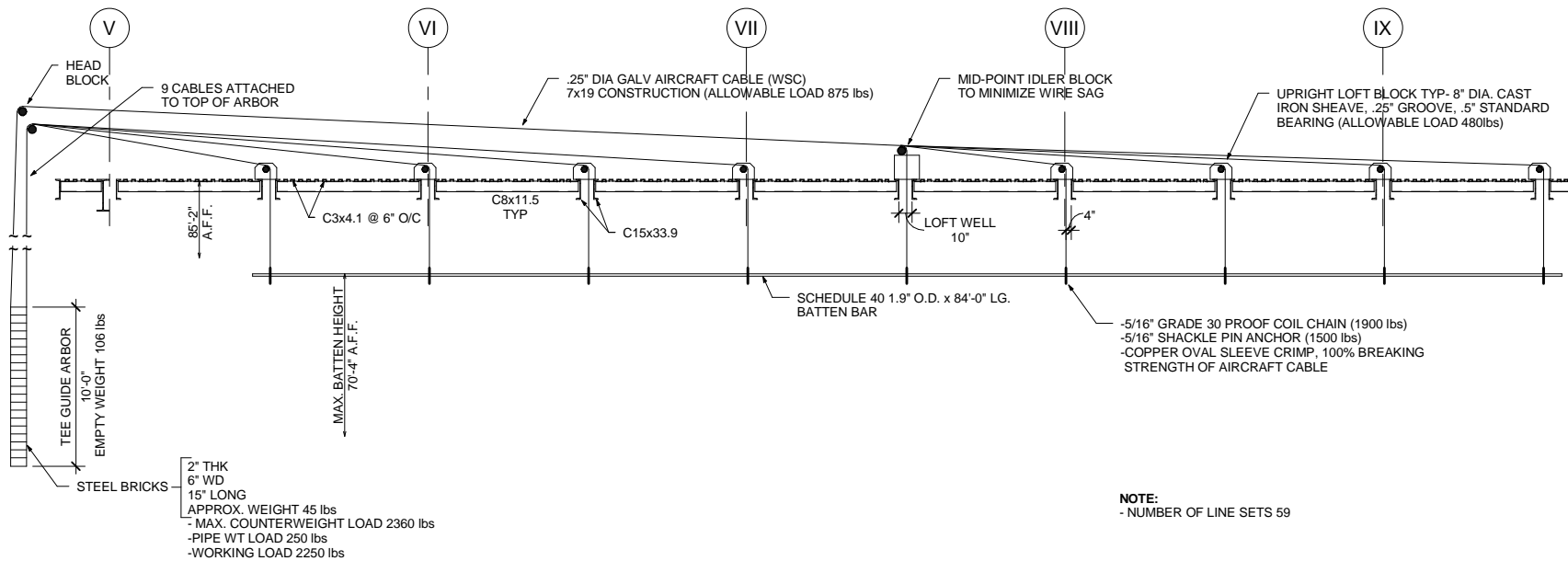
4. Loads must include Rigging Points and Fly System.
5. Loads not on a loft block channel should be suspended with a rated beam or pipe spanning from loft block well to loft block well.
 - Suspended loads should not be bridled.
6. Any event that exceeds these allowable loads shall require the advice of an engineer.

These loads are an interpretation from the Stantec Structural Assessment of the Stage Roof Structure and Grid Level Steel, February 8, 2011.
 If there is a discrepancy between this document and the engineered report, the later shall prevail.

11/10/2009 11:15:14 AM V:\11153\proj\11530162\design\drawing\Rev11530162.dwg
 (page 1) of 1

ORIGINAL SHEET - 11x17

11/10/2009
 11:15:14 AM



- 2" THK
- 6" WD
- 15" LONG
- APPROX. WEIGHT 45 lbs
- MAX. COUNTERWEIGHT LOAD 2360 lbs
- PIPE WT LOAD 250 lbs
- WORKING LOAD 2250 lbs

NOTE:
 - NUMBER OF LINE SETS 59

UPRIGHT COUNTERWEIGHT LINE SET SYSTEM

Notes

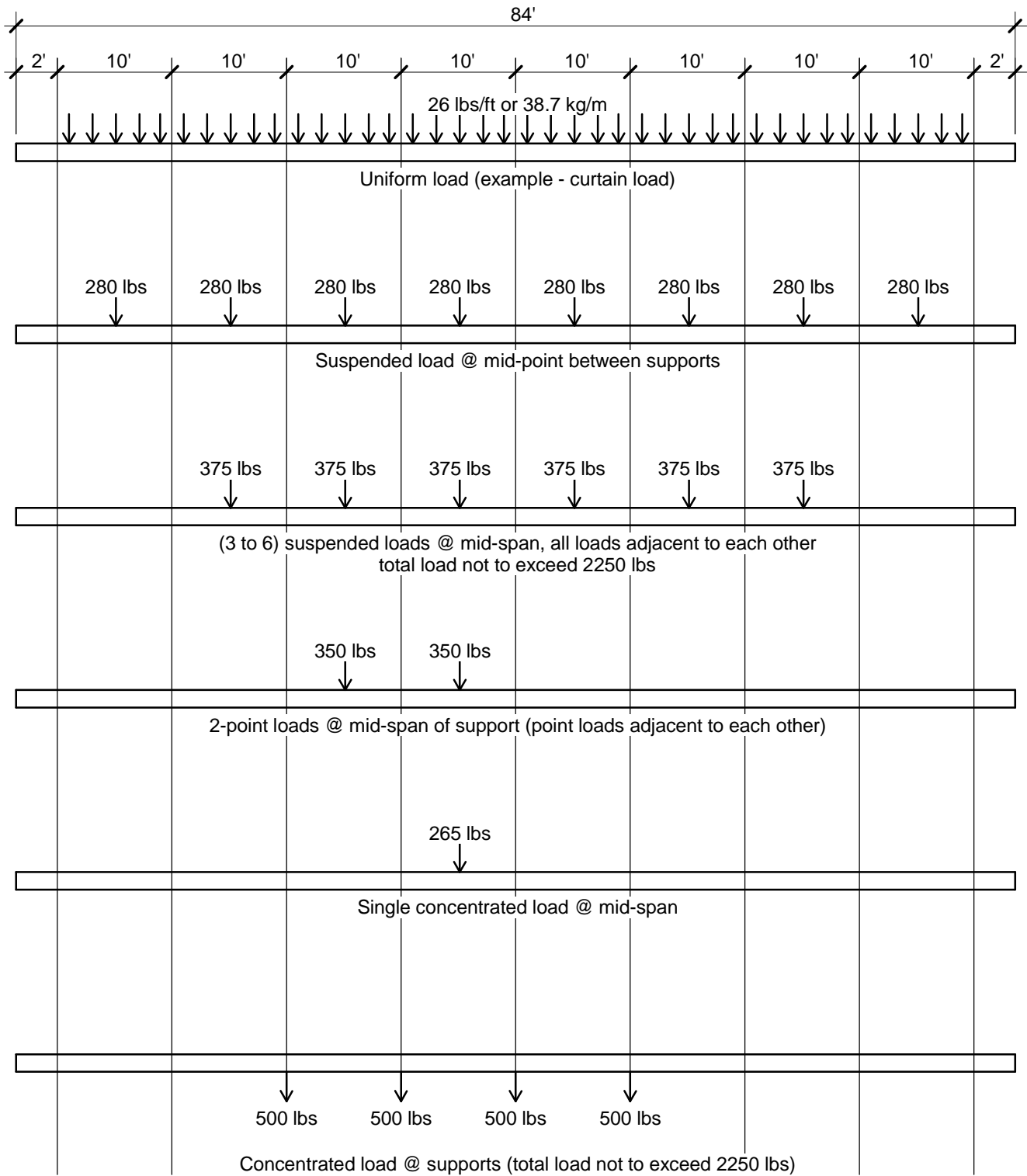
Client: Pmsncr
**NORTHERN & SOUTHERN ALBERTA JUBILEE
 AUDITORIUMS EDMONTON & CALGARY, ALBERTA**

Figure No. **6.3.1**

Title **UPRIGHT COUNTERWEIGHT LINE SET SYSTEM**



Stantec Consulting Ltd
 Stantec Centre
 200, 325 25th Street SE
 Calgary AB T2A 7H8
 Tel. 403.716.8000
 Fax. 403.716.8019
 www.stantec.com



11/10/2009 11:16:08 AM V:\1153\active\115301624\design\drawing\Revit\115301624S_1 (Calgary).rvt

ORIGINAL SHEET - 8.5x11

11/10/2009
11:16:08 AM



Stantec

Stantec Consulting Ltd

Stantec Centre
200, 325 25th Street SE
Calgary AB T2A 7H8
Tel. 403.716.8000
Fax. 403.716.8019
www.stantec.com

Client/Project

**NORTHERN & SOUTHERN ALBERTA JUBILEE AUDITORIUMS
EDMONTON & CALGARY, ALBERTA**

Figure No.

6.3.3

Title