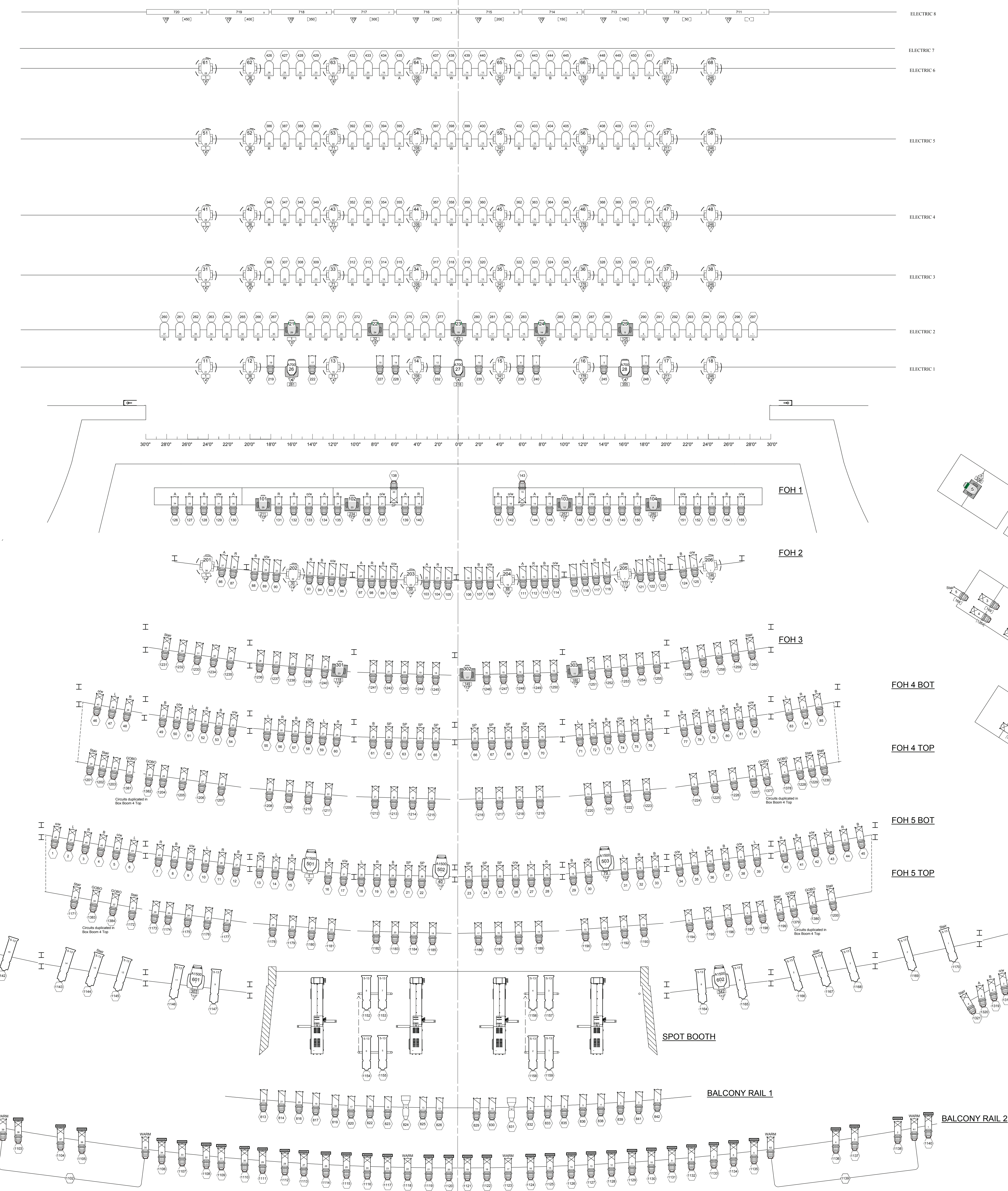
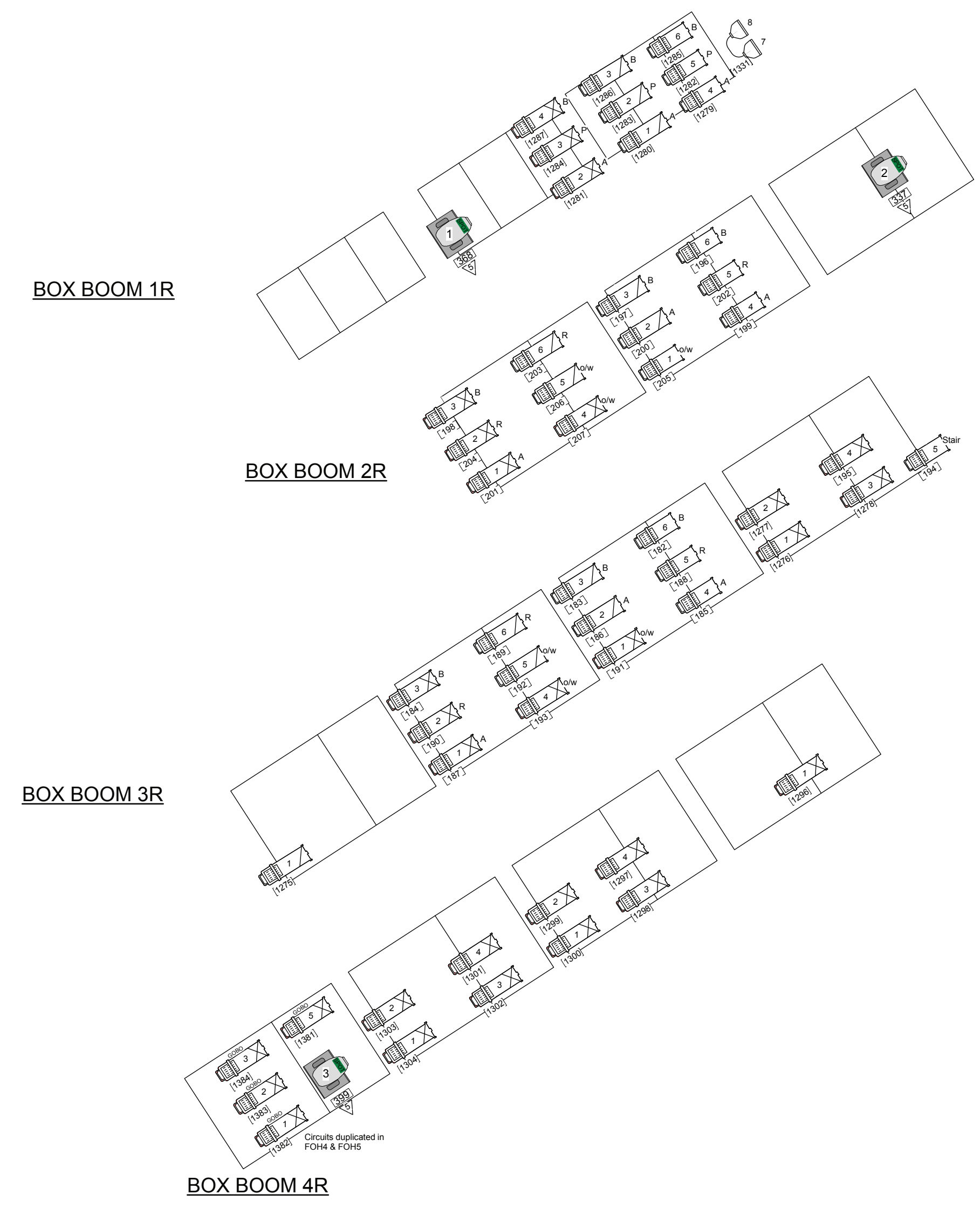
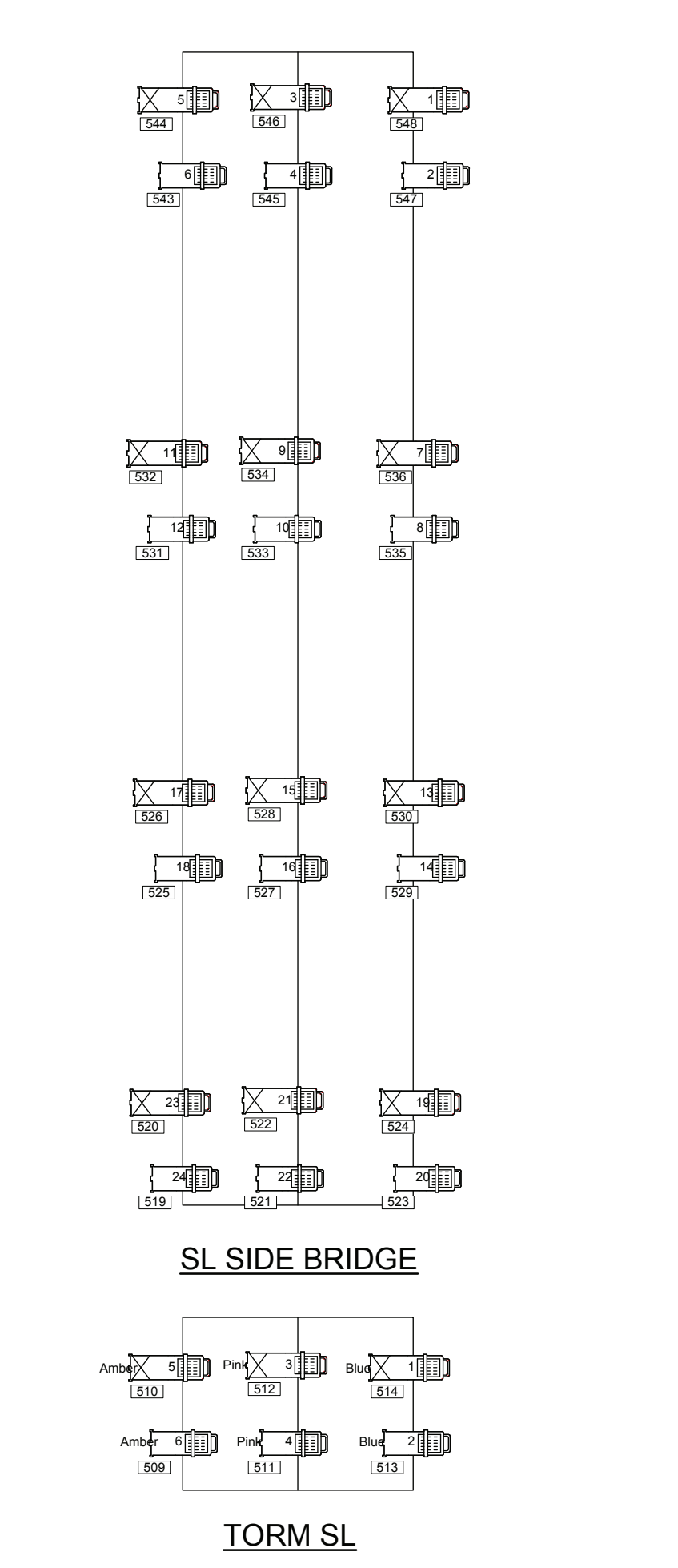
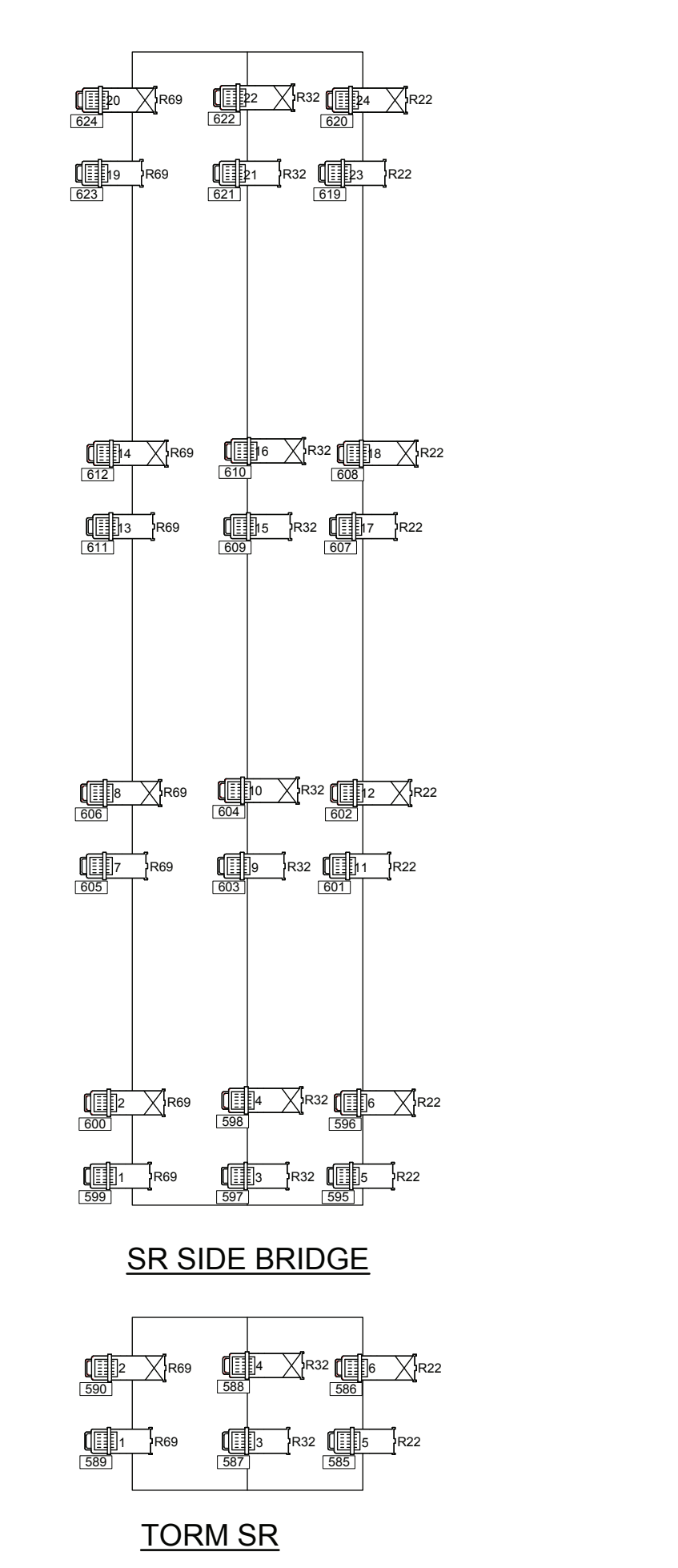


HOUSE CYC	62
	60
	59
	58
ELECTRIC 8 (LED Cyc)	57
	56
	55
	54
	53
	52
ELECTRIC 7 (empty)	51
	50
	49
ELECTRIC 6	48
	47
	46
	45
	44
	43
	42
	41
	40
	39
ELECTRIC 5	38
	37
	36
	35
	34
	33
	32
	31
	30
	29
	28
ELECTRIC 4	27
	26
	25
	24
	23
	22
	21
	20
	19
	18
ELECTRIC 3	17
	16
	15
	14
	13
	12
ELECTRIC 2	11
	10
	9
ELECTRIC 1	8
	7
	6
	5
	4
	3
	2
	1



LAMP POSITIONS ARE TAKEN FROM CENTRE

**Government of Alberta**

**NORTHERN ALBERTA JUBILEE AUDITORIUM**  
 11455 - 87th Avenue, Edmonton, Alberta, T6G 2T2  
 Phone (780) 427-2760 Fax (780) 422-3750  
 www.jubileeauditorium.com

**MAIN STAGE**  
 Lighting Plot Base Drawing

File: NAJA\_2016\_Nov.vwx  
 Date: November 5, 2016

Scale: 1/4" = 1'  
 Drawn by: S. Ross & T. Williamson & K. Humphrey  
 Contact: Northern.Jube.Tech@gov.ab.ca

NOTE: No guarantee of accuracy is made about this drawing.

Sheet # **1**

**Jubilee Auditorium**  
 IMAGINE [EXCITE] INSPIRE