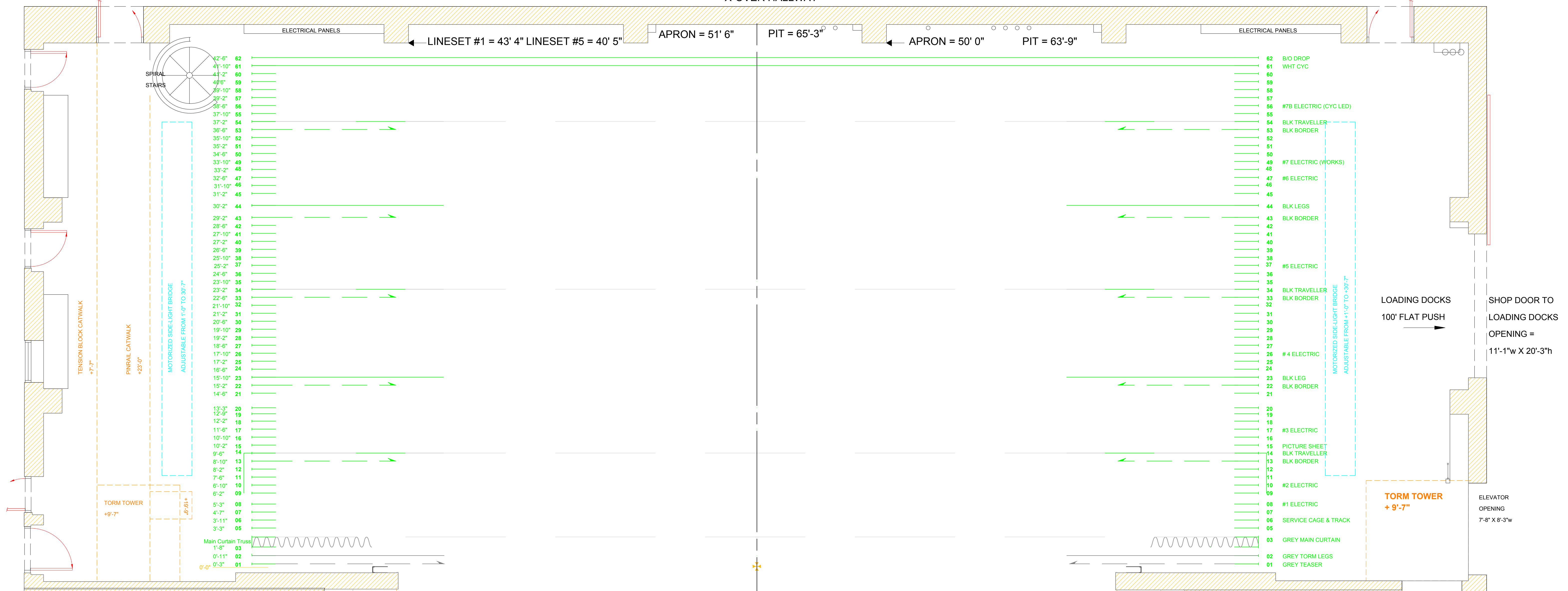
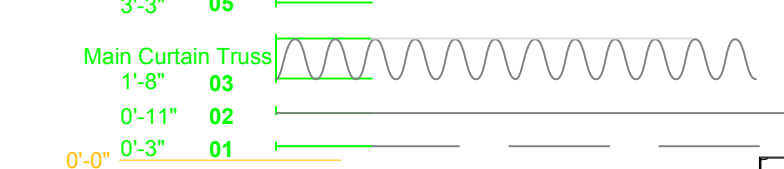


X-OVER HALLWAY



- 62 B/O DROP
- 61 WHT CYC
- 60
- 59
- 58
- 57
- 56 #7B ELECTRIC (CYC LED)
- 55
- 54 BLK TRAVELLER
- 53 BLK BORDER
- 52
- 51
- 50
- 49 #7 ELECTRIC (WORKS)
- 48
- 47 #6 ELECTRIC
- 46
- 45
- 44 BLK LEGS
- 43 BLK BORDER
- 42
- 41
- 40
- 39
- 38
- 37 #5 ELECTRIC
- 36
- 35
- 34 BLK TRAVELLER
- 33 BLK BORDER
- 32
- 31
- 30
- 29
- 28
- 27
- 26 #4 ELECTRIC
- 25
- 24
- 23 BLK LEG
- 22 BLK BORDER
- 21
- 20
- 19
- 18
- 17 #3 ELECTRIC
- 16
- 15 PICTURE SHEET
- 14 BLK TRAVELLER
- 13 BLK BORDER
- 12
- 11
- 10 #2 ELECTRIC
- 09
- 08 #1 ELECTRIC
- 07
- 06 SERVICE CAGE & TRACK
- 05
- 03 GREY MAIN CURTAIN
- 02 GREY TORM LEGS
- 01 GREY TEASER



- 1'-8" 03
- 0'-11" 02
- 0'-3" 01
- 0'-0" 01



Government of Alberta

NORTHERN ALBERTA JUBILEE AUDITORIUM
 11455 - 87th Avenue, Edmonton, Alberta, T6G 2T2
 Phone (780) 427-2760 Fax (780) 422-3750
 www.jubileeauditorium.com

MAIN STAGE
 Plan View

File: Stage-Plan.dwg
 Date: April, 2015
 Scale: 1/4" = 1' Sheet # **1**

Dr. by TW - Contact: 780-427-5933
 Northern.Jube.Tech@gov.ab.ca