

X-OVER HALLWAY

ELECTRICAL PANELS

LINESET #1 = 43' 4" LINESET #5 = 40' 5"

APRON = 51' 6"

PIT = 65'-3"

APRON = 50' 0"

PIT = 63'-9"

ELECTRICAL PANELS

SPIRAL STAIRS

- 42'-6" 62
- 41'-10" 61
- 41'-2" 60
- 40'-6" 59
- 39'-10" 58
- 39'-2" 57
- 38'-6" 56
- 37'-10" 55
- 37'-2" 54
- 36'-6" 53
- 35'-10" 52
- 35'-2" 51
- 34'-6" 50
- 33'-10" 49
- 33'-2" 48
- 32'-6" 47
- 31'-10" 46
- 31'-2" 45
- 30'-2" 44
- 29'-2" 43
- 28'-6" 42
- 27'-10" 41
- 27'-2" 40
- 26'-6" 39
- 25'-10" 38
- 25'-2" 37
- 24'-6" 36
- 23'-10" 35
- 23'-2" 34
- 22'-6" 33
- 21'-10" 32
- 21'-2" 31
- 20'-6" 30
- 19'-10" 29
- 19'-2" 28
- 18'-6" 27
- 17'-10" 26
- 17'-2" 25
- 16'-6" 24
- 15'-10" 23
- 15'-2" 22
- 14'-6" 21
- 13'-3" 20
- 12'-9" 19
- 12'-2" 18
- 11'-6" 17
- 10'-10" 16
- 10'-2" 15
- 9'-6" 14
- 8'-10" 13
- 8'-2" 12
- 7'-6" 11
- 6'-10" 10
- 6'-2" 09
- 5'-3" 08
- 4'-7" 07
- 3'-11" 06
- 3'-3" 05
- 1'-8" 03
- 0'-11" 02
- 0'-3" 01

TENSION BLOCK CATWALK +7'-7"

PINRAIL CATWALK +23'-0"

MOTORIZED SIDE-LIGHT BRIDGE ADJUSTABLE FROM +1'-0" TO +30'-7"

TORM TOWER +9'-7"

+6'-8 1/2"

PROSCENIUM OVERHANG +10' 2" +25' 0"

MOTORIZED SIDE-LIGHT BRIDGE ADJUSTABLE FROM +1'-0" TO +30'-7"

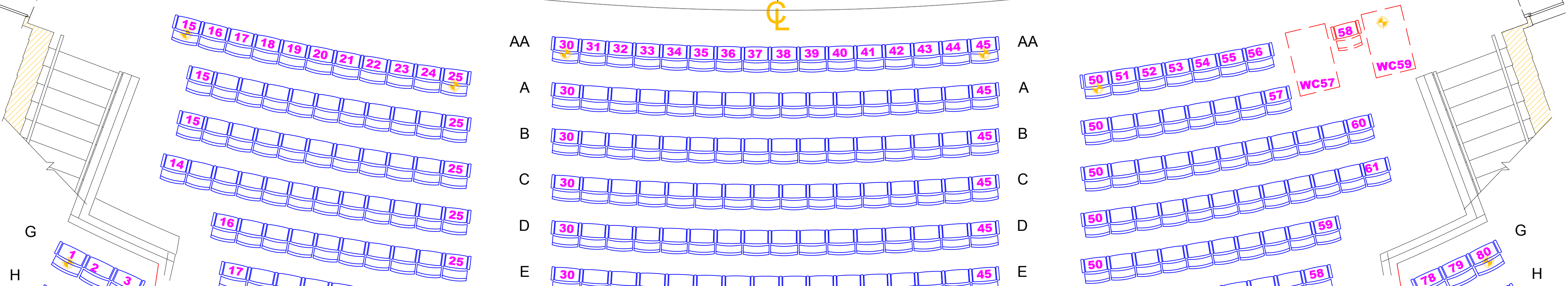
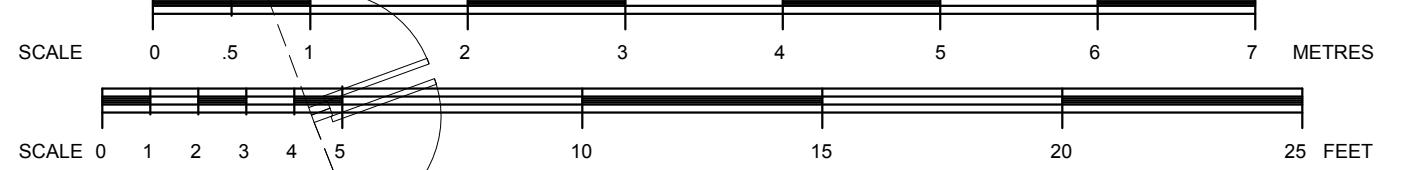
LOADING DOCKS 100' FLAT PUSH

SHOP DOOR TO LOADING DOCKS OPENING = 11'-1"w X 20'-3"h

TORM TOWER +9'-7"

ELEVATOR OPENING 7'-8" X 8'-3"w

AUDIO PATCH ROOM



**Government of Alberta**

NORTHERN ALBERTA JUBILEE AUDITORIUM  
11455 - 87th Avenue, Edmonton, Alberta, T6G 2T2  
Phone (780) 427-2760 Fax (780) 422-3750  
www.jubileeauditorium.com

MAIN STAGE  
Plan View

File: Stage-Plan.dwg  
Date: April, 2015  
Scale: 1/4" = 1'  
Sheet # 1

Dr. by TW - Contact: 780-427-5933  
Northern.Jube.Tech@gov.ab.ca

NORTHERN ALBERTA JUBILEE AUDITORIUM